

Classes begin
November 2013



man-imal

One world, one health

Pioneering training programme based on the
"One world, One health" concept
promoted by the WHO, FAO, and OIE

Master MAN-IMAL

"Man-Animal-Food Health:
Transdisciplinary Management of Global
Health and Nutritional Safety"



An IDEFI Laureat programme (Initiatives for **E**xcellence
in **I**nnovative **T**raining - IDEFI)

This programme is organised in partnership with:



Why choose the MAN-IMAL Master 2 programme?

The MAN-IMAL programme was created **in response to a major change in society**. Today, production chains are becoming more and more complex due to globalisation, industrialisation and the growing number of industry actors and regulations. As such, new objectives regarding the food humans consume have developed and directly influence not only animal production and nutrition, but also the preservation and composition of food production. These changes eliminate the boundaries between animal health, human health and food production sectors. A demand for new professional profiles, experts capable of understanding production and public health stakes, able to work in transdisciplinary teams on both national and international levels, has been identified.

The overall objective of the MAN-IMAL Master's programme is to **train senior level executives**, specialised in their field (life sciences, medical sciences, veterinary sciences, agricultural engineering), by working together over the course of one year in order **to acquire the same shared culture as well as to share their specific knowledge**.

In doing so, these new professionals will be able to **respond to the current and future requirements of the food-processing sector and the field of health and quality expertise**.

For whom?

The MAN-IMAL training programme is intended for doctors, pharmacists, veterinarians, agricultural or food-processing engineers and scientists who seek a double diploma reinforced by the synergy of each student's knowledge in their field of expertise, permitting the following: executive training, the acquisition of a shared culture (production and risk management systems), hazard analysis know-how, evaluation and prevention of health and nutritional risks, health crisis resolution. The pluridisciplinary balance of the group is assured by the selective student screening during the application process.

By whom?

This innovative programme has been developed in partnership by Oniris, the Nantes-Atlantic National College of Veterinary Medicine, Food Science and Engineering, the Faculties of Medicine at the University of Nantes and Angers and the ESA Group (l'Ecole Supérieure d'Agriculture). This partnership contributes to the enhancement of complementary skills.

Oniris: skills in animal health, biological and chemical food safety, veterinary public health and food-processing engineering.

The Faculties of Medicine at Nantes and Angers: skills in human health, nutrition and public health.

The ESA Group: skills in agricultural and food engineering, and the development of sustainable agricultural and food systems.

Examples of possible

Private sector

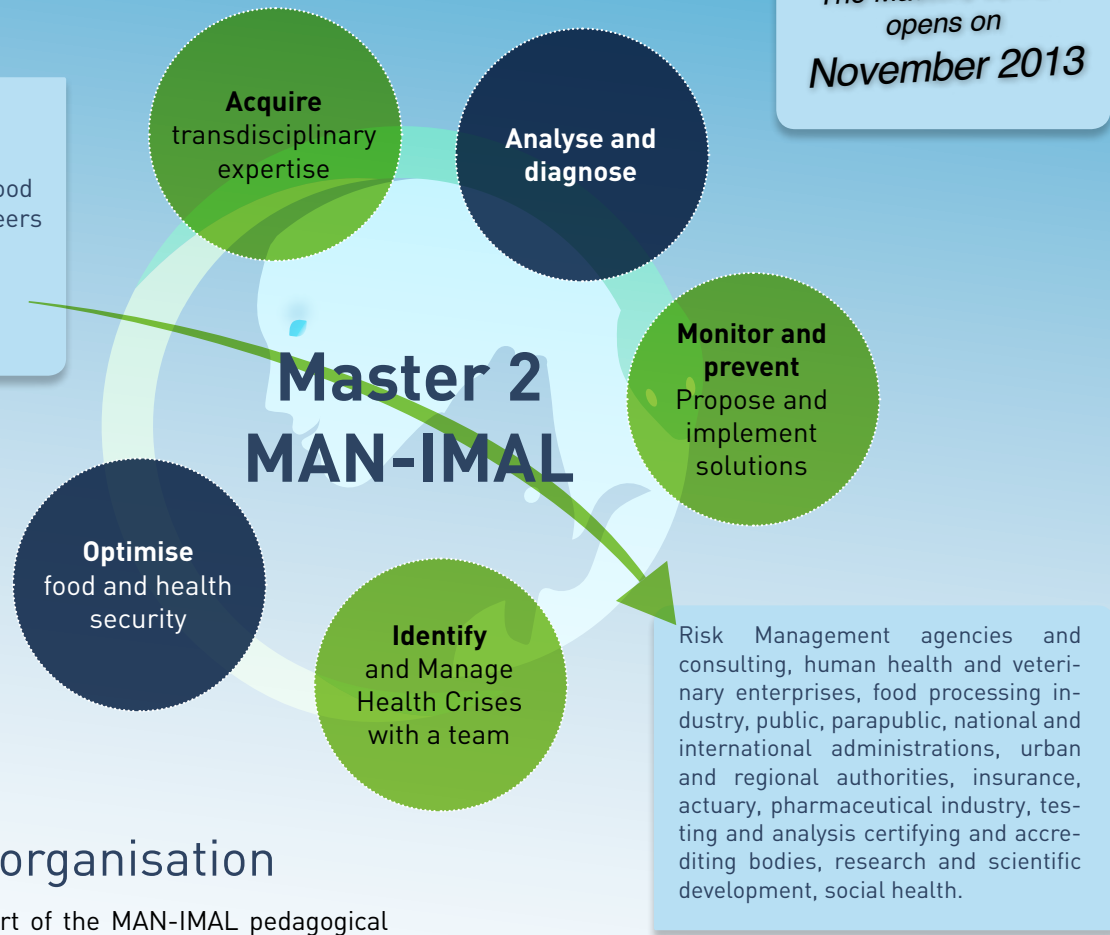
- Senior Scientists of Evaluation and Health/Nutritional Risk Assessment for agricultural or health organisations, animal husbandry health and quality organisations, producer groups, the Chamber of Agriculture.
- Consultants and experts in food processing and pharmaceutical sectors, research and development offices.
- Senior level executives and Risk Managers in food processing, pharmaceutical and insurance companies.
- Researchers and Executives in the field of R&D.

professional opportunities

Public sector

- Consultants and experts for local governments, decentralised services of the Ministry of Health and of Agriculture, agencies dedicated to the assessment of health risks in France and Europe.
- Senior Scientists in public and parapublic health organisations or for public health sanitary risk assessment, both nationally and internationally (EFSA, Anses, InVS, OIE, FAO...).
- Health and Nutritional Risk Managers in the national civil service and local governments.
- Researcher in the fields of zoonosis, human nutrition, animal and human health.

- Life sciences scientists
- Agriculture and Food Processing Engineers
- Medical Doctors
- Veterinarians
- Pharmacists

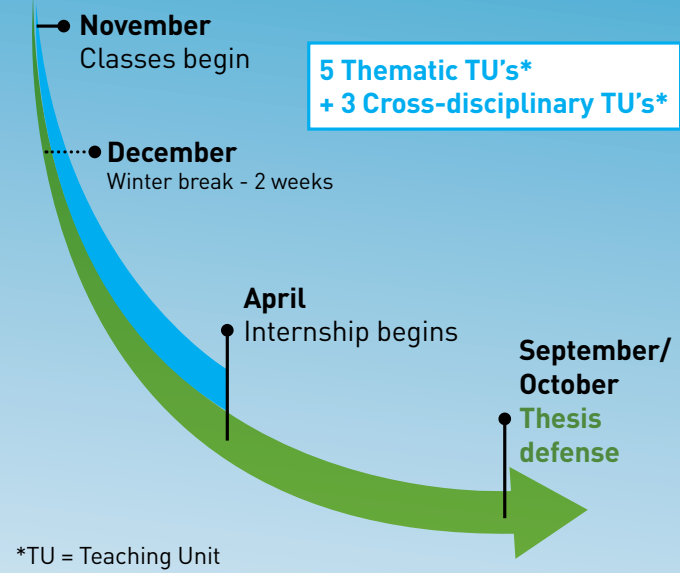


Programme organisation

Over 80 people form part of the MAN-IMAL pedagogical team which is comprised of teacher-researchers from various disciplines (agronomy, medicine, veterinary studies, life sciences, pharmacy, law, economy...), as well as numerous industry professionals (over 40% of the programme).

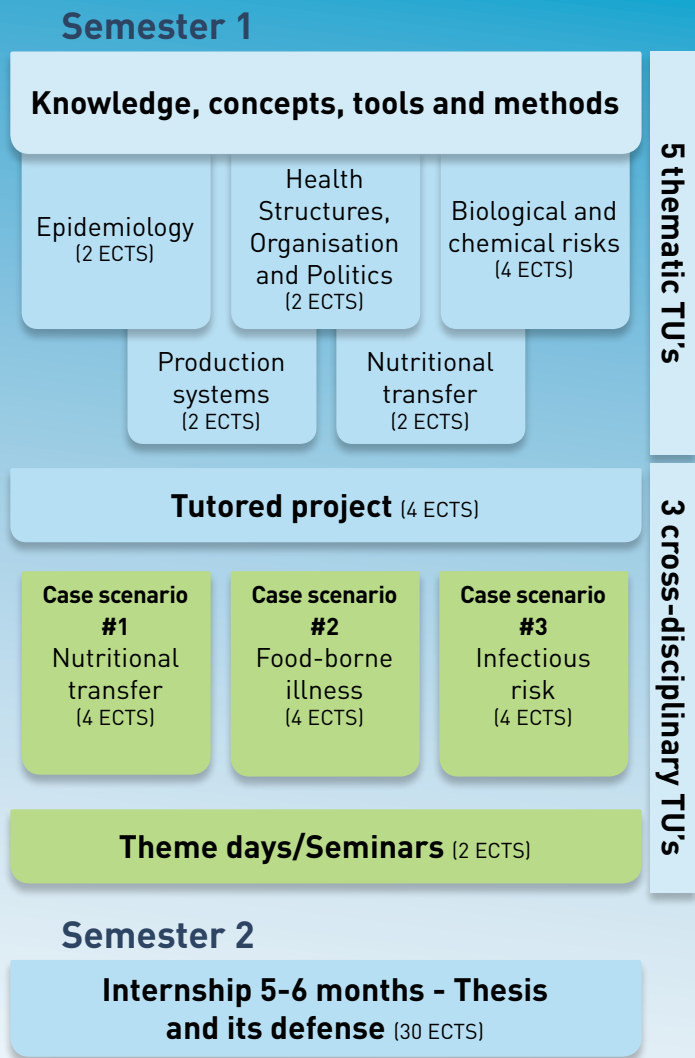
The MAN-IMAL course strongly emphasizes the **pedagogical use of ICTE¹** allowing for maximum, individual progression within the programme and the learning processes. Furthermore, the international environment created, via the chosen applicants and teacher-researchers from abroad, will undeniably enhance the students' cultural awareness and global approaches to public health issues. **The use of the English language** as the communication medium will be extremely developed.

The first semester of the programme, from November to March (30 ECTS), is dedicated to acquiring theoretical knowledge, tools and methods of the five themes, completed via inter and transdisciplinary projects combining three cross-disciplinary teaching units. Through this approach, the students will develop the team work, and abilities, necessary to identify the complementary partners required for case solving.



The second semester, from April to September, is dedicated to the completion of an internship in a professional environment, followed by the completion and defense of a Master's thesis whose subject is directly related to a MAN-IMAL theme. Choosing the internship is done so with regards to the professional motivation of each student in order to foster his/her employment possibilities. This can be done in a variety of ways such as opting to intern with private businesses, organisations dedicated to risk assessment and management, or as complementary research training with a recognized research team, or via other European specialities. The internship may be completed in France or abroad.

The MAN-IMAL diploma will be delivered to students who have satisfied the assessment requirements (ongoing evaluation: based upon individual contribution and knowledge, case scenario group work and tutored project, completion and defense of thesis. The internship marks are based upon the work and progress demonstrated during the internship, the written thesis and its defense).



Student financial aid

Financial aid for this programme may be available according to each applicant's dossier. All requests for financial aid must be sent along with the complete application file. See scholarship applications for details.

¹Information and communication technologies in education



How to apply?

ADMISSION CRITERIA

In order to be eligible for the MAN-IMAL Master 2, **candidates must hold a Bachelor's degree and have acquired a minimum of 60 Master ECTS credits** in pharmaceutical or biological sciences, medical studies, veterinary studies, food processing engineering or agriculture.

APPLICATION PROCEDURE

The application form can be found on each university partners' website (Oniris, ESA, Faculties of Medicine of Nantes and Angers).

The application file must be printed, filled out in full and sent with all supporting documents.

- Session #1: the complete application file must be sent by **May 27, 2013**
- Session #2: the complete application file must be sent by **September 20, 2013**
preferably via email to contact.manimal@oniris-nantes.fr

Or by post to the following address:

Formation MAN-IMAL, Oniris, Site de la Chantrerie, CS 40706, 44307 Nantes Cedex 3, France

The MAN-IMAL M2 tuition fee is approximately 250 euros*.

All students wishing to apply to another programme, in parallel with the MAN-IMAL Master 2, must contact their institution of origin regarding the tuition costs and requirements for the award of a joint degree.

**Fee likely to evolve according to the index of the current year.*



contact.manimal@oniris-nantes.fr