



What I learnt about working with other people



Escuela Técnica Superior de Ingeniería del Diseño

## European Industrial Management



*From 4<sup>th</sup> February to 6<sup>th</sup> June*

*Holidays: March 10<sup>th</sup> – 20<sup>st</sup>*

*April 5<sup>th</sup> – 16<sup>th</sup>*

*April 28<sup>th</sup> - May 1<sup>st</sup>*



# ***What is "European Industrial Management"?***

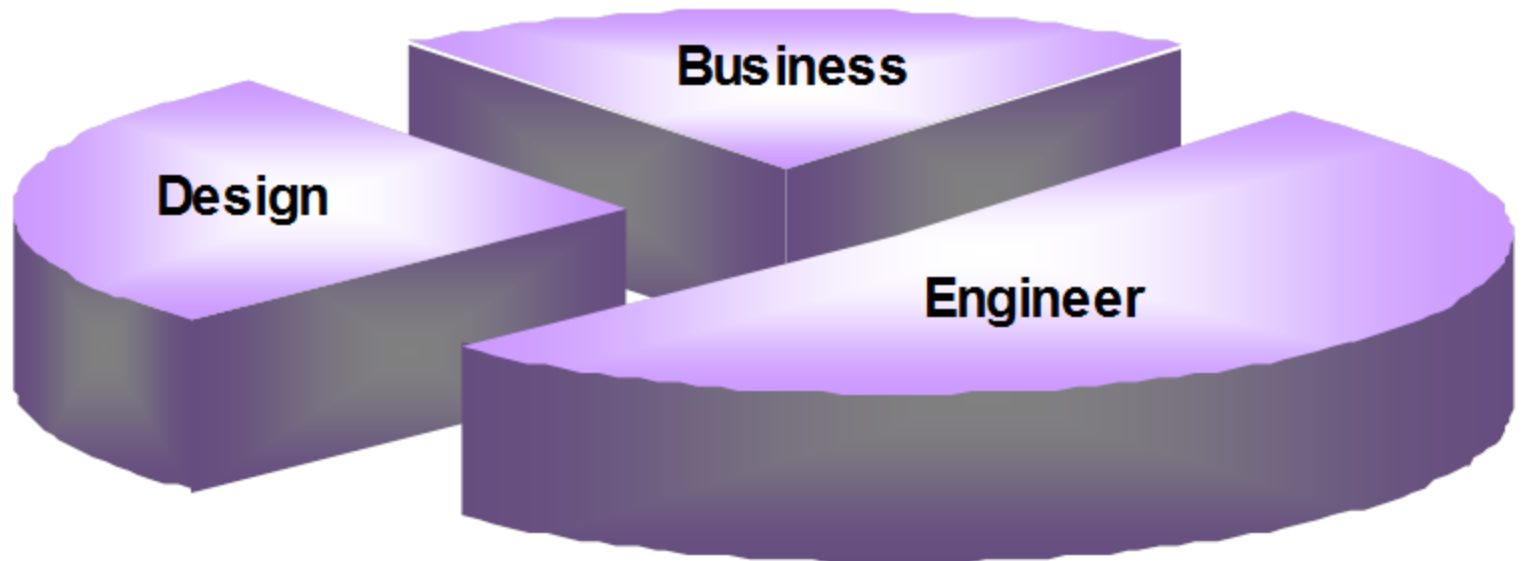
*A educational package (30 ECTS).*

*International and interdisciplinary teamwork.*

*Project work-Learning by doing.*

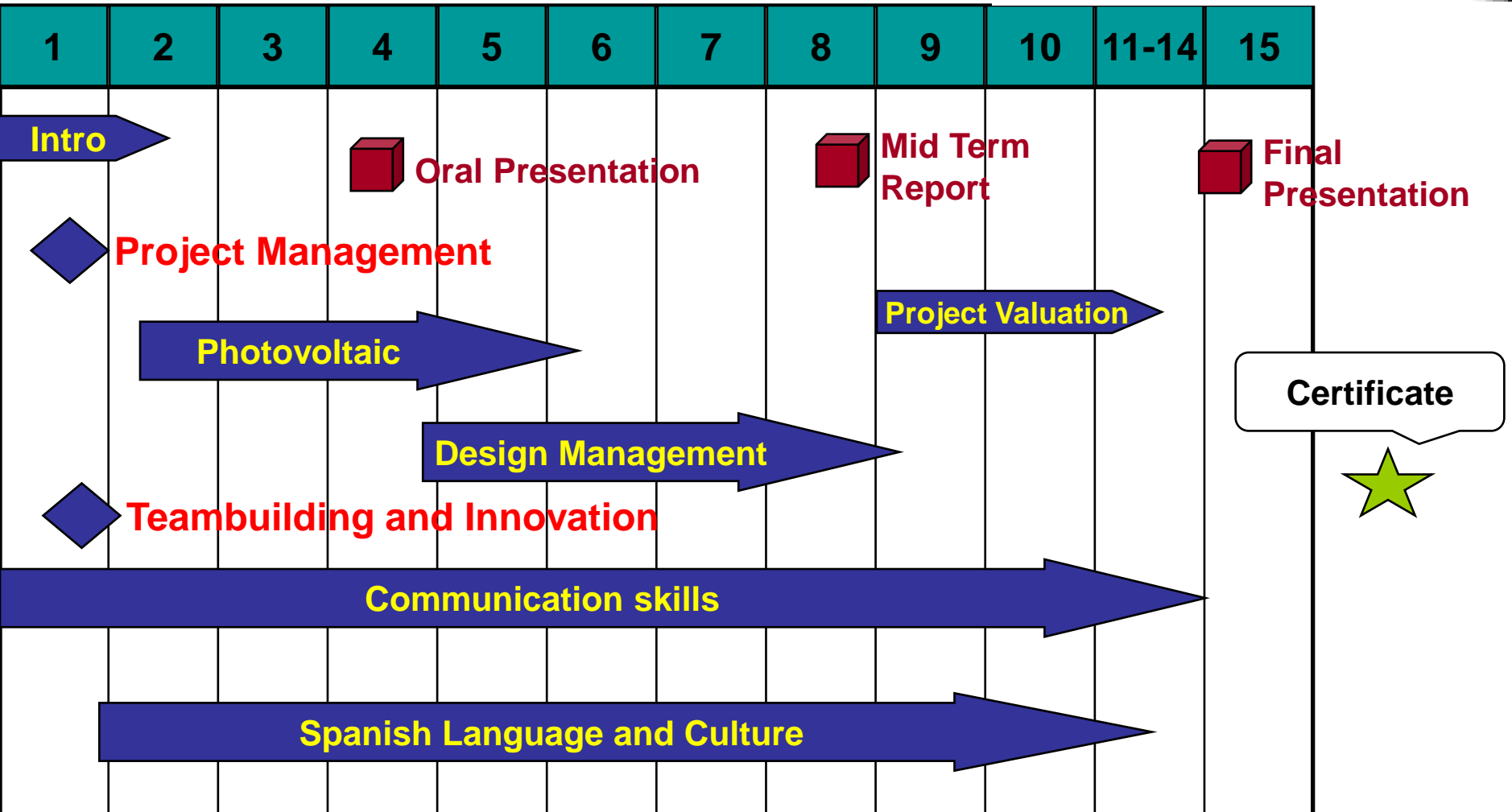
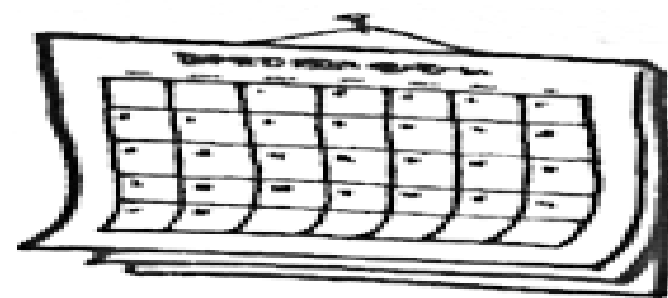
*An "eye-opener".*

**Students Background**



# What is "EIM Valencia"?

## Calendar (weeks)





Belbin

Group test

Chair meetings

Communication

Gant chart

WBS

...

# Teambuilding & Project Management





Innovate

Communicate

Compete



Cooperate

# Why?

***Because we are happy doing EIM***

*Avoids “death by lectures”.*

*XXI century skills.*

*Strategy.*



***EIM is a perfect dessert***

*In the future graduates must be able to:*

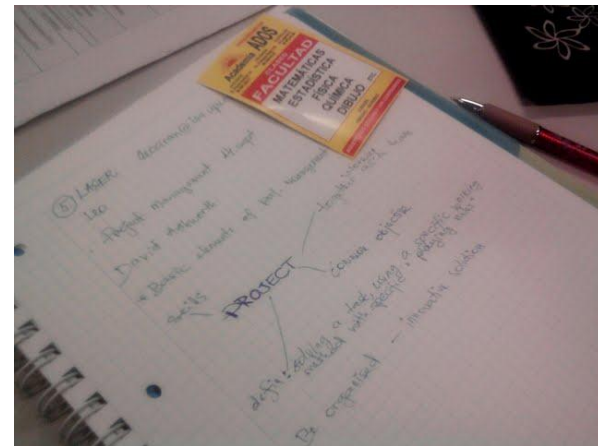
*Work in interdisciplinary teams.*

*Operate internationally.*

*Speak foreign languages.*

*Cooperate with people of different cultures.*

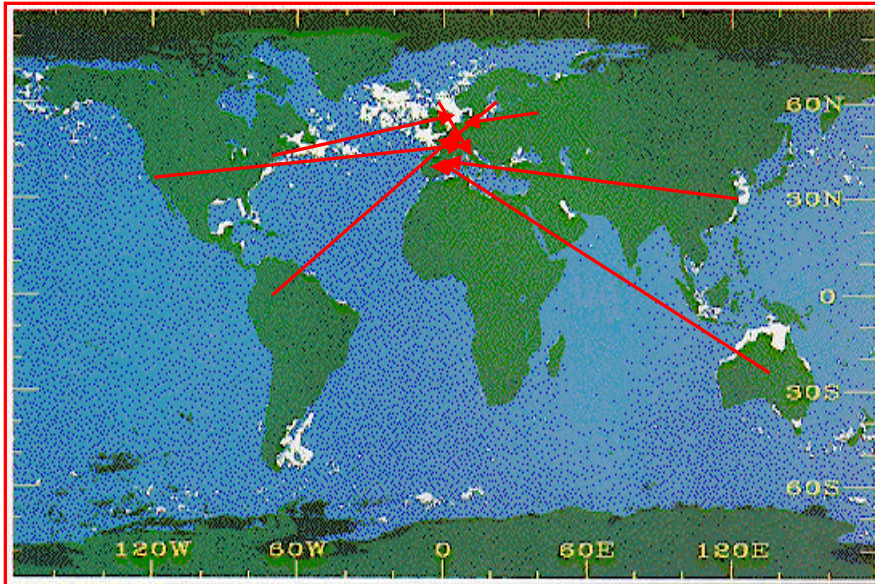
*Communicate well...*





# ***Who participated in EIM? Multicultural family***

***Students from 26 countries:***



*Australia, Belgium,  
Bulgary, Czech Rep.,  
Denmark, Estonia,  
Japan, Italy, Netherlands...*

*Coordinators  
Professors  
Externals*

*Austria, Ecuador, Finland,  
France, Germany, México,  
Spain, Sweden, Korea,  
Portugal, Poland,  
UK, USA...*



# ***Who participated in EIM? Multidisciplinary***

**Students: 20-30 from different disciplines**



**UPV Professors from 8 different departments**

**External (academics and companies):**

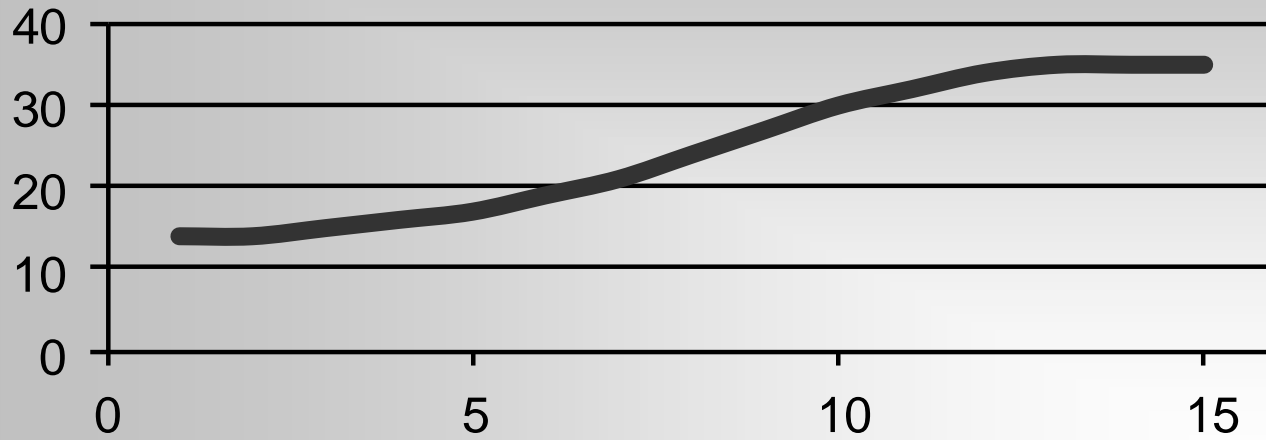
**Univ. Nottingham Trent, UK; Hogeschool Antwerpen, Belgium;  
Turku Univ. of Applied Sciences, Finland; Bradford University, UK  
IHK, Denmark...**

## Overview of Assessment

Element	Assessed through	Mark	Assessed by		
Process	Teamwork and participation	35%	Supervisors	Staff	Participants (self and peer)
Individual	Oral presentation	15%		Staff	
Product	Report	50%	Supervisors	Staff	
		100%	50%	30%	20%



## Project workload (h/w)





V  
I  
S  
I  
T  
S





**Further information: Pedro Fuentes <[pfuentes@iqn.upv.es](mailto:pfuentes@iqn.upv.es)>**

