

## INFORMATION AND REGISTRATION

Candidates must submit registration by sending enclosed form to:

Prof. Luis Tavares - [ltavares@fmv.utl.pt](mailto:ltavares@fmv.utl.pt)

Teresa Inácio- [tbaltazar@fmv.utl.pt](mailto:tbaltazar@fmv.utl.pt)

**CIISA-Faculdade de Medicina Veterinária**

**Gabinete de Formação Avançada**

Av. Da Universidade Técnica

1300-477 Lisboa

Tel. +351 213652805/02

Fax.+351 213652810



Fulfills education requirements for  
Cat. C - course defined  
by Federation of European Laboratory  
Animal Science (FELASA)  
To license laboratory animal users.

## ORGANIZATION:

**Faculdade de Medicina Veterinária**  
**Centro de Investigação Interdisciplinar em Sanidade**  
**Animal (CIISA)**

**Lecturers:** Ana Paula Martins; António Duarte; António Ferreira; Belmira Carrapiço; Berta S. Braz; Cristina Vilela; Esmeralda Delgado; Fernando Afonso; Harry Blom; Isabel Neto; João Romão; Luis Ferreira; Luis Gama; Luis Tavares Pim Rooymans; Vera Baumans



with SUPPORT FROM:

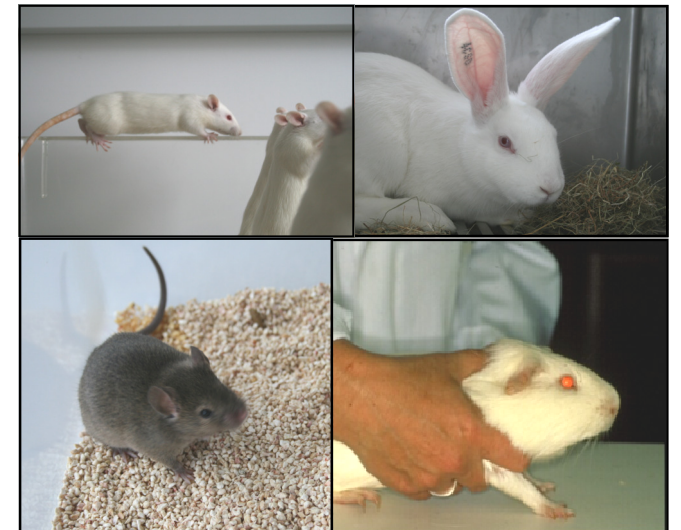


## X CURSO de EXPERIMENTAÇÃO ANIMAL

### Laboratory Animal Science Course

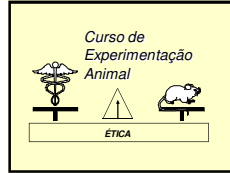


**Faculdade de Medicina Veterinária**  
**21<sup>st</sup> March - 1<sup>st</sup> April 2011**



Universidade Técnica de Lisboa  
**PORTUGAL**

## X CURSO DE EXPERIMENTAÇÃO ANIMAL LABORATORY ANIMAL SCIENCE COURSE



### Faculdade de Medicina Veterinária 21<sup>st</sup> March - 1<sup>st</sup> April 2011

FMV/UTL, the Center for Interdisciplinary Research in Animal Health (CIISA) in collaboration with Utrecht University and other National and International institutions organize another intensive course in Laboratory Animal Science aimed for researchers who wish to acquire knowledge on the correct use of animals for research purposes.

## OBJECTIVES

The main general objective of the course is to supply researchers with education and professional competencies to use animals in scientific research, considering alternatives, applicable legislation, the experimental design and relevant ethical issues, to optimize results.

Participants will acquire skills in techniques of handling, restraining, sampling and drug administration in the different laboratory animal species, basic rules of husbandry, housing, genetics, pathology, microbiology and nutrition of laboratory animals.

Competencies will also be acquired in techniques for detection and alleviation of pain and distress, to avoid and minimize animal suffering and to allow for an educated choice of the experimental procedures to adopt.

## METHODS

The different subjects will be covered during two weeks in lectures and practical sessions, supplying the participants with the basic scientific knowledge applicable later to maximize the success of their results in future animal experiments, in full respect of related ethics and legislation.

**Lectures:** Introduction Lab. Animal Science, Ethics of animal experimentation; Welfare and experimental procedures; Alternatives to animal procedures; Experimental design; Portuguese Legislation; International legislation; Microbiologic Qualities and Control; Genetic standardization and manipulation; Nutrition of Laboratory Animals; Ethics in Animal Based Research; Perioperative care, analgesia, anaesthesia; Diseases of laboratory animals; (Micro) surgical techniques/telemetry; Methods of humane euthanasia; Statistics and Experimental Design; Behaviour/ Stress/ Well-being ; Housing and caging; Animal Facilities; The Laboratory Fish.

**Practices:** Practical handling and restraining techniques in five animal species; experimental techniques: collection of body fluids; administration of substances; surgery and suturing; necropsy in animal research; preparation and presentation of an experimental protocol; group work.

**Official language - English**



## TARGETS

The Course can be attended by anyone holding at least a BSc (Bolonha 1st cycle) degree in one of the biomedical sciences including Veterinary, Medicine, Biology, Pharmacy or similar.

Participants will be selected based on registration date, previous education, institution of origin and institutional interests.

**Registration and payment before 10/03/2011**

*Limited to 30 participants / edition*

REGISTRATION FEES	
Before 10/02/2011	1 000 €
After 10/02/2011	1 250 €

*Fee includes course materials, coffee breaks and lunch during course days .*

*(Accommodation can be arranged upon request)*

## CREDITS

*Work load: 100h*

*Two weeks, Monday - Friday  
from 9 am to 6 pm.*

**3.0 ECTS credits + Certificate of Attendance**

